



DIGESTIVE CANCERS
EUROPE

MASTERCLASS SERIES

Role of the Immune response in early stage colorectal cancers: a new era in precision medicine

By Dr Tony Dhillon

Consultant Medical Oncologist at The Royal Surrey Hospital , Guildford, UK



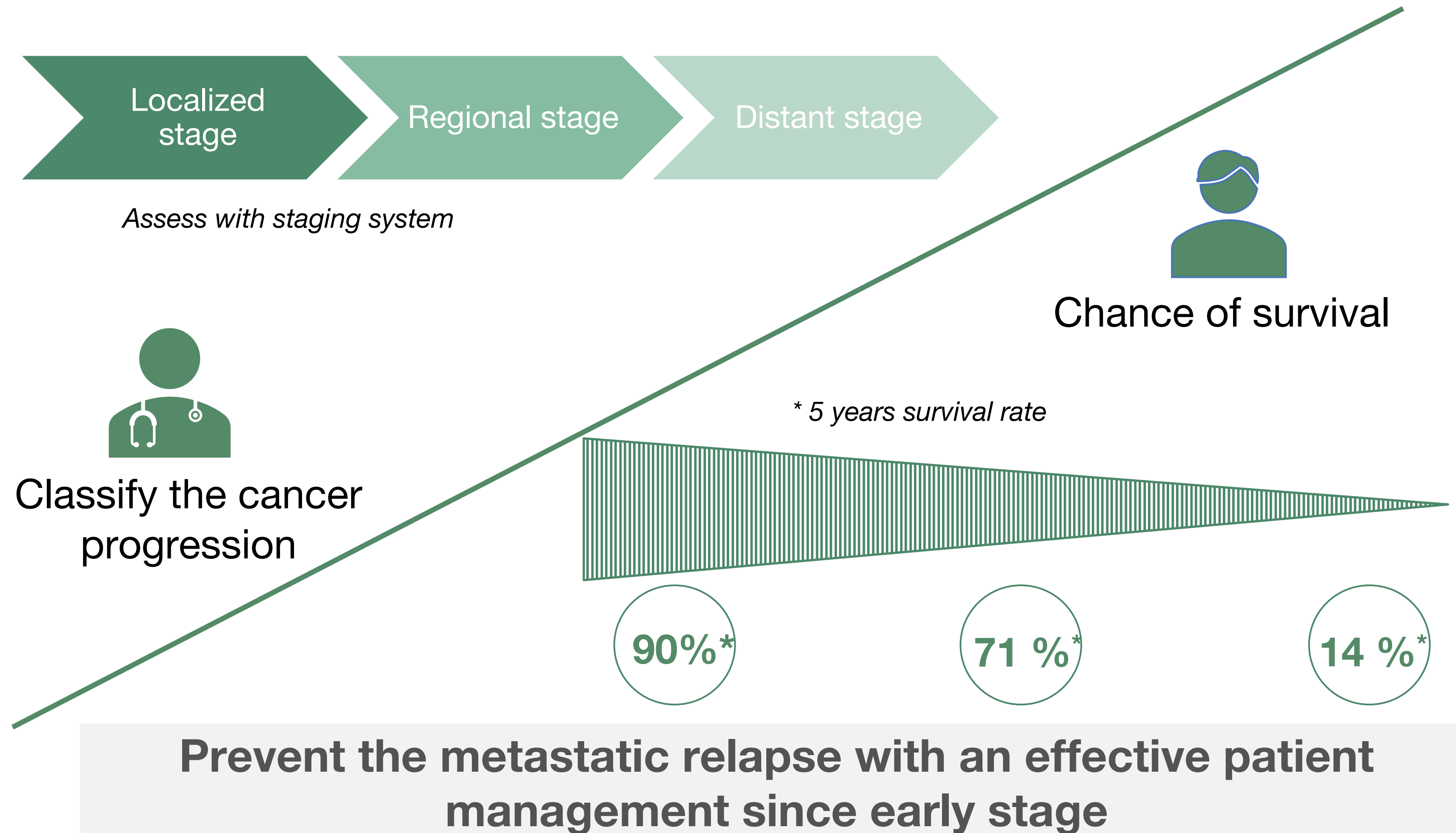
Colorectal cancer- Key figures

- CRC 2nd most lethal cancer and 3rd most common cancer worldwide
- 2018 1.8 million cases worldwide
- 5 year survival is 65% and goes down to 12% for metastatic disease
- 25% present late despite widespread screening
- Early disease treated with surgery± chemo depending on stage

Key challenge in the early colorectal cancers is to prevent the relapse

SEER database

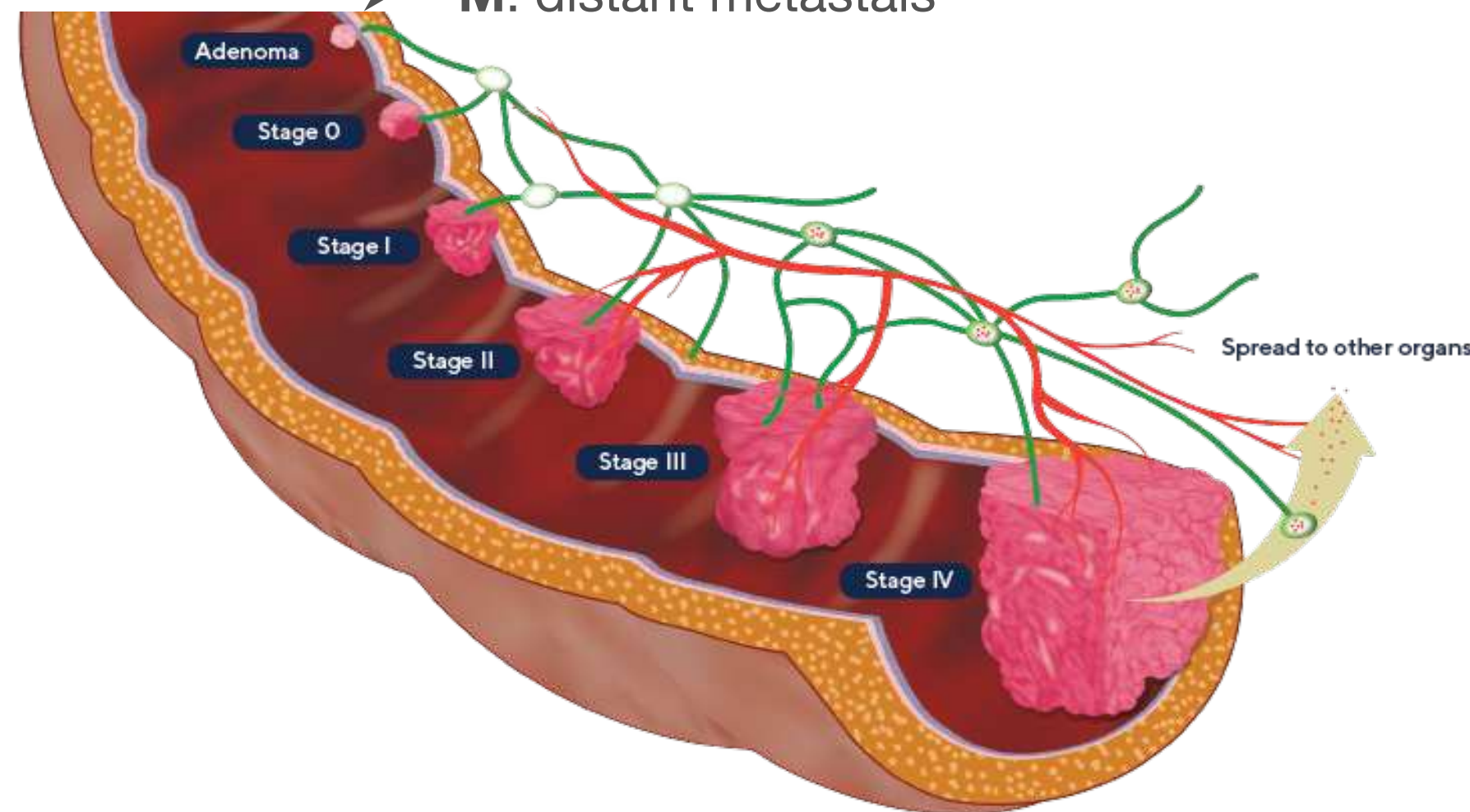
Colorectal cancer progression



The CRC ' therapeutic strategy is based on incomplete risk-assessment tool

Gold standard : TNM Classification

- T: tumeur extension
- N: regional lymph nodes
- M: distant metastais



TNM stage does not accurately reflect survival for many patients

S
U
R
G
E
R
Y

+/-

C
H
E
M
O

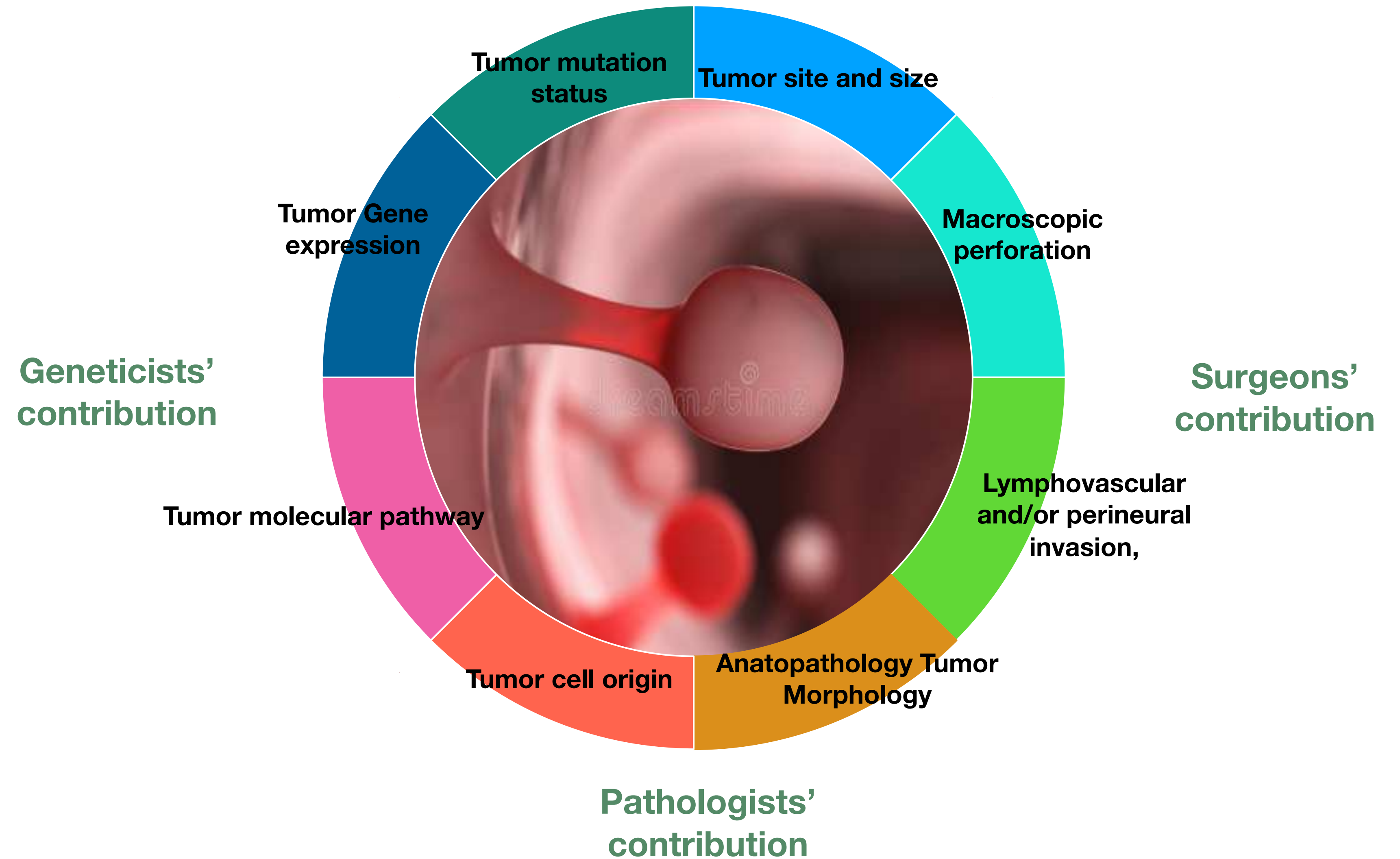
Reality for Patients based on TNM staging only

many
Over-treated
and some
Under-treated

A need for additional biomarker to
OPTIMIZE adjuvant treatment decisions

Tumor profiling improved the TNM system and cancer prognosis

Staging
system has
been
improved by a
better
understanding
of tumor
profile



Paul Ehrlich
The Nobel Prize in Physiology or
Medicine 1908

Royal Institute for Experimental
Therapy,
Prize motivation: "in recognition of
their work on immunity."
Prize share: ½ Ilya Mechnikov

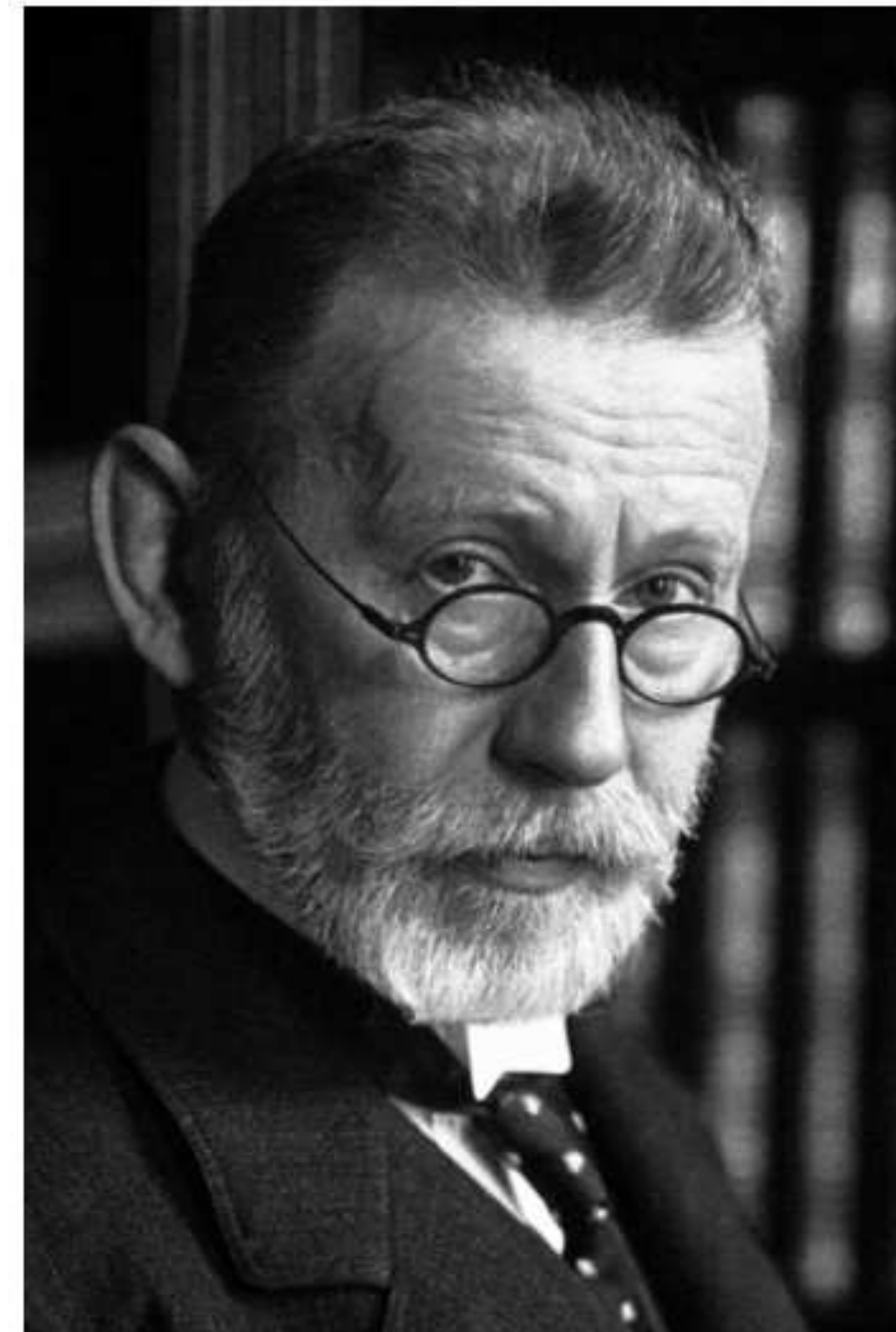
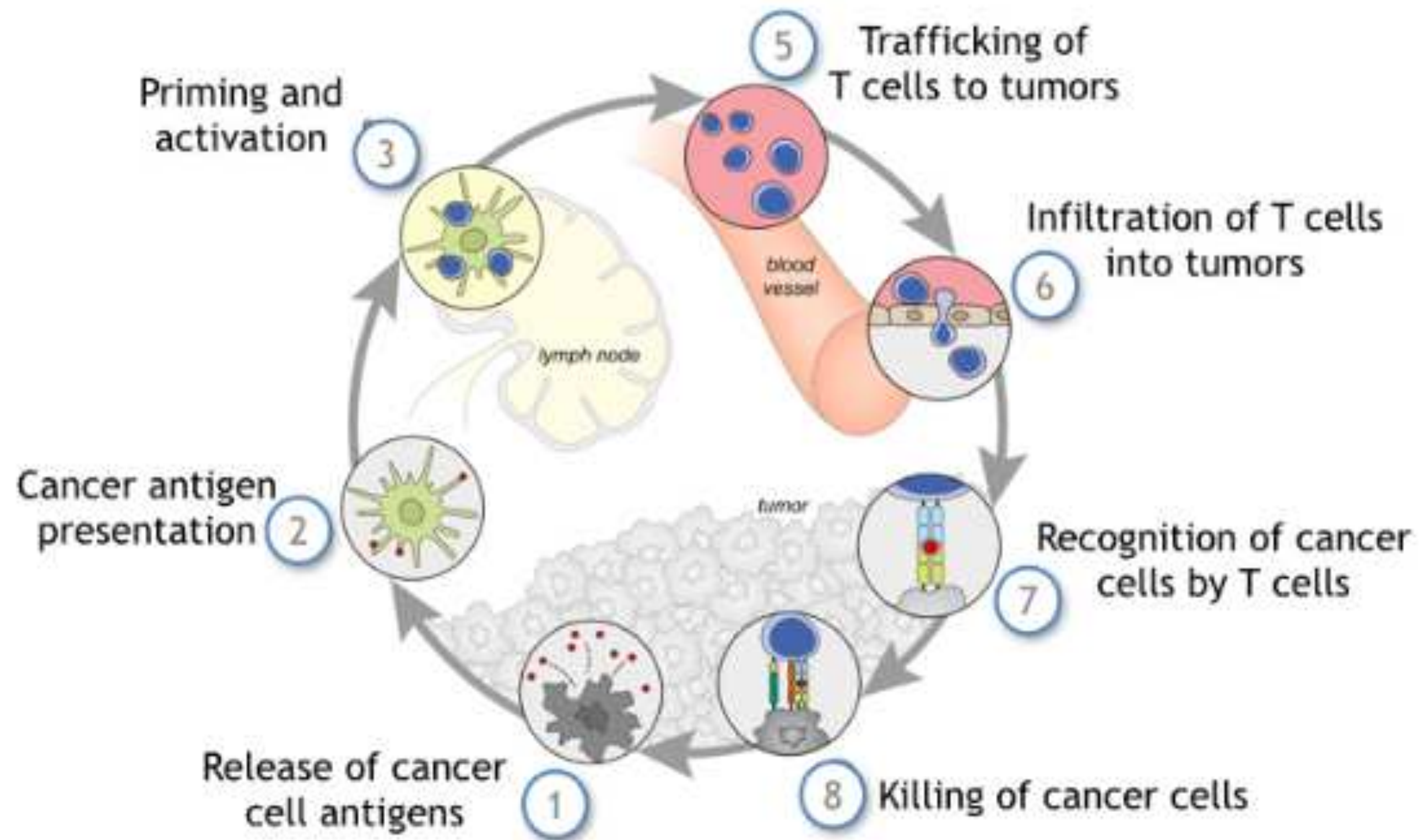


Photo from the Nobel
Foundation archive.

- ❖ The protective value of immunity was initially proposed by Paul Ehrlich in 1909;
- ❖ however, it was impossible to access the validity of the prediction
- ❖ limited awareness of the immune system.

Host immune assets from hope to reality...
**Immunomodulatory roles of nutritional, lifestyle, and
pharmacological factors including omega-3 PUFA, vitamin D,
physical activity**

The Cancer Immunity Cycle



- ❖ Latest discoveries of the immune system's involvement in cancer progression with the advent of immunotherapy.
- ❖ Presence of T-cells in the tumor can influence at each step of cancer progression

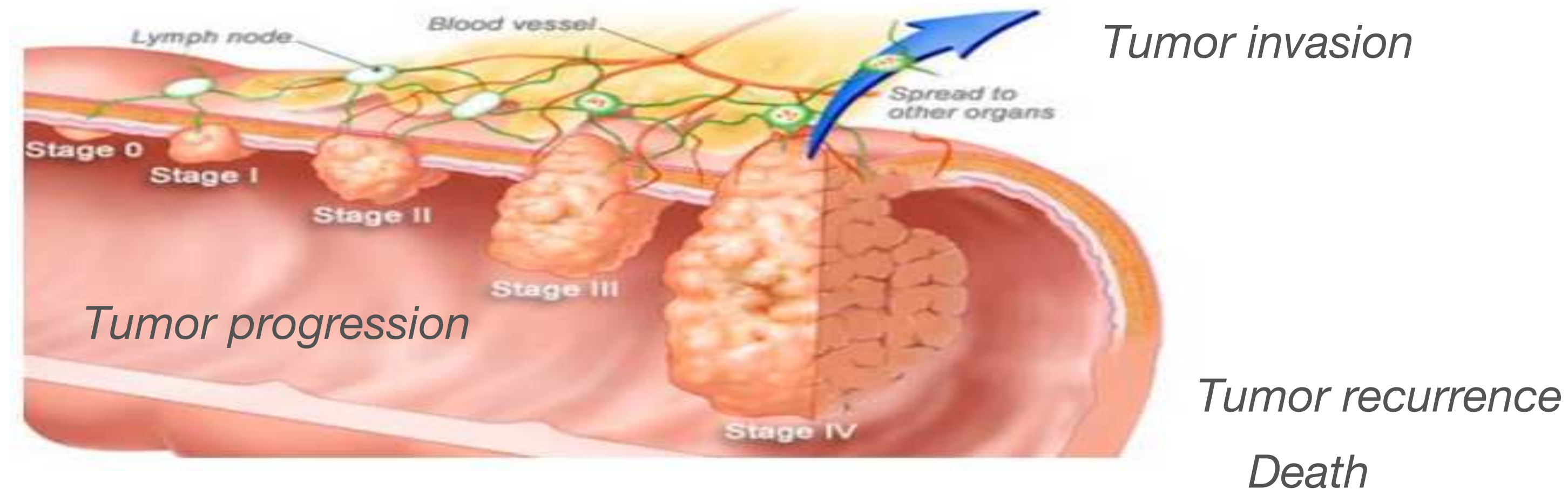
The latest discoveries on the role of immune microenvironment massively changed our cancer diagnosis and treatment approach

More important than clinico-pathological feature, the survival is predetermined by pre-existing immunity

Hot
Tumor

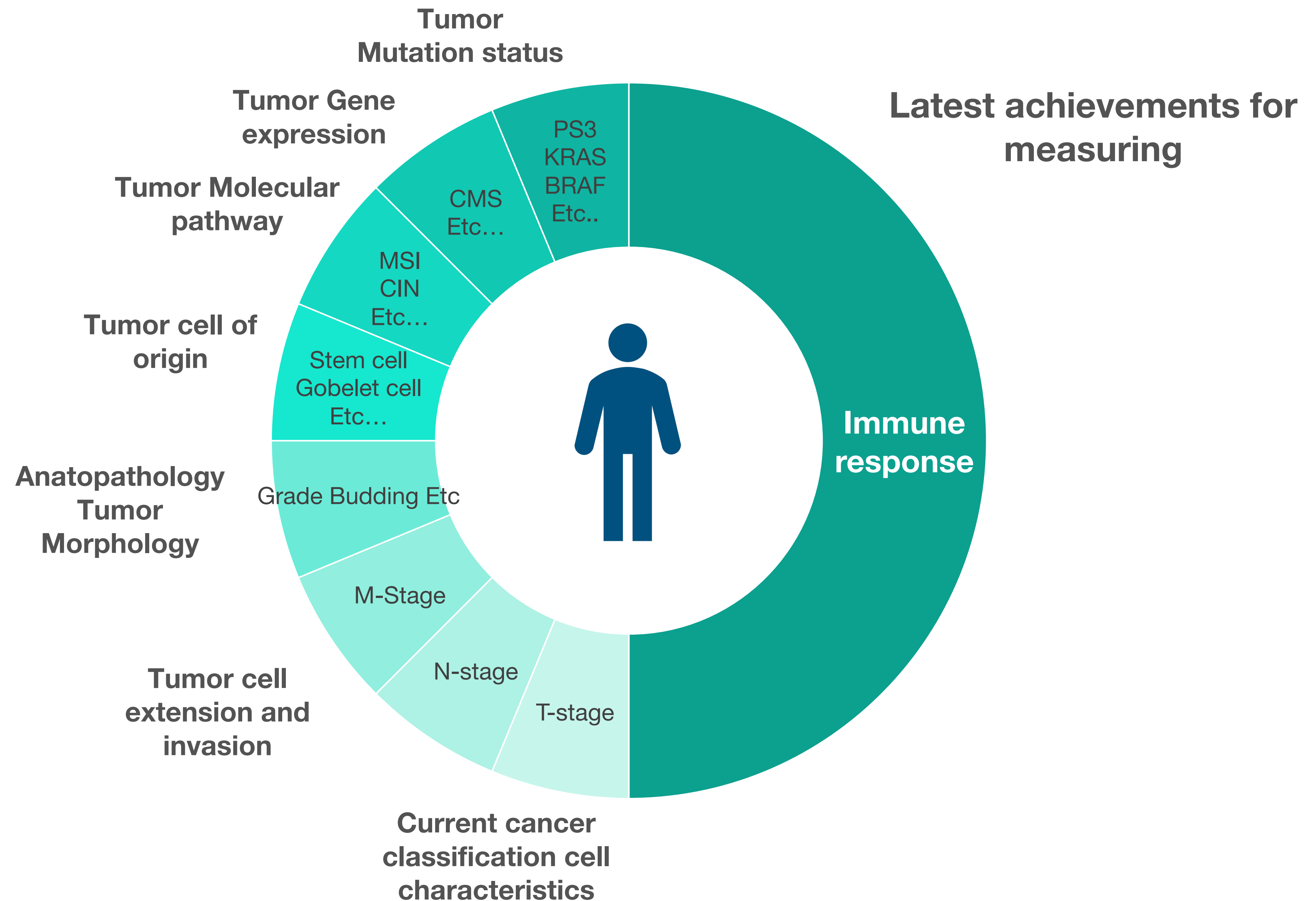
Immune contexture

Cold
Tumor



- ✓ Tumor progression, invasion and recurrence are dependent on pre-existing immunity
- ✓ Pre-existing immunity is determining the fate and survival of the patient

**Include
immune
response,
completes
and refines
knowledge
about the
patient's
cancer**



As a key parameter now, the immune response can be measured to assess digestive tumors



- **WHO Blue book is the gold standard for the diagnosis of tumors with regular updates to keep up to date to innovations**
- **This international authoritative reference book considers now immune response as an essential and desirable diagnostic criteria for colorectal cancer by the WHO**
- **The tool is likely to complement the traditional staging system (cf. TNM-I claim)**

Key characteristics for a good biomarker

- ✓ **Clinically validated:** studies conducted on a large cohort of patients with consistent and similar results
- ✓ **Accurate** : Superior to current technologies
- ✓ **Repeatable** : same result as many times as you do the test
- .
- ✓ **Stable** : stable results for all settings
- ✓ **Applicable and available:** in the routine practice, for all facilities

Difference between a prognostic and predictive diagnostic test

Patient journey

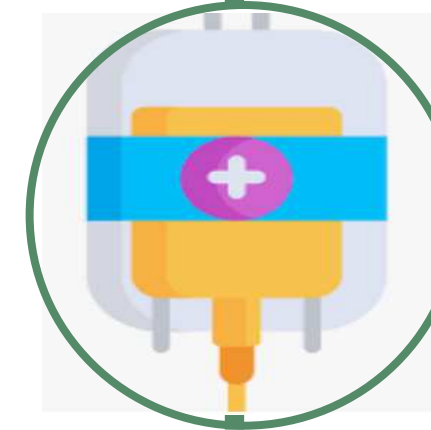
(precision medicine)

PREDICTIVE
Biomarker

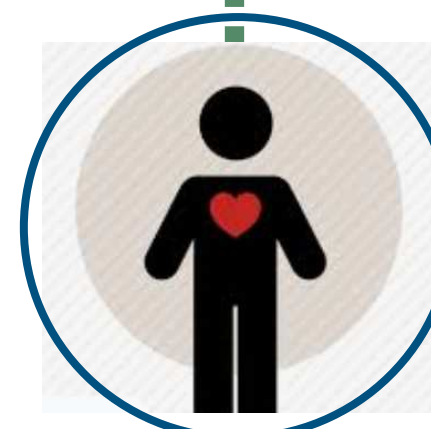
Will the **TREATMENT**
benefit **ME**?



Diagnosis



Treatment



Remission

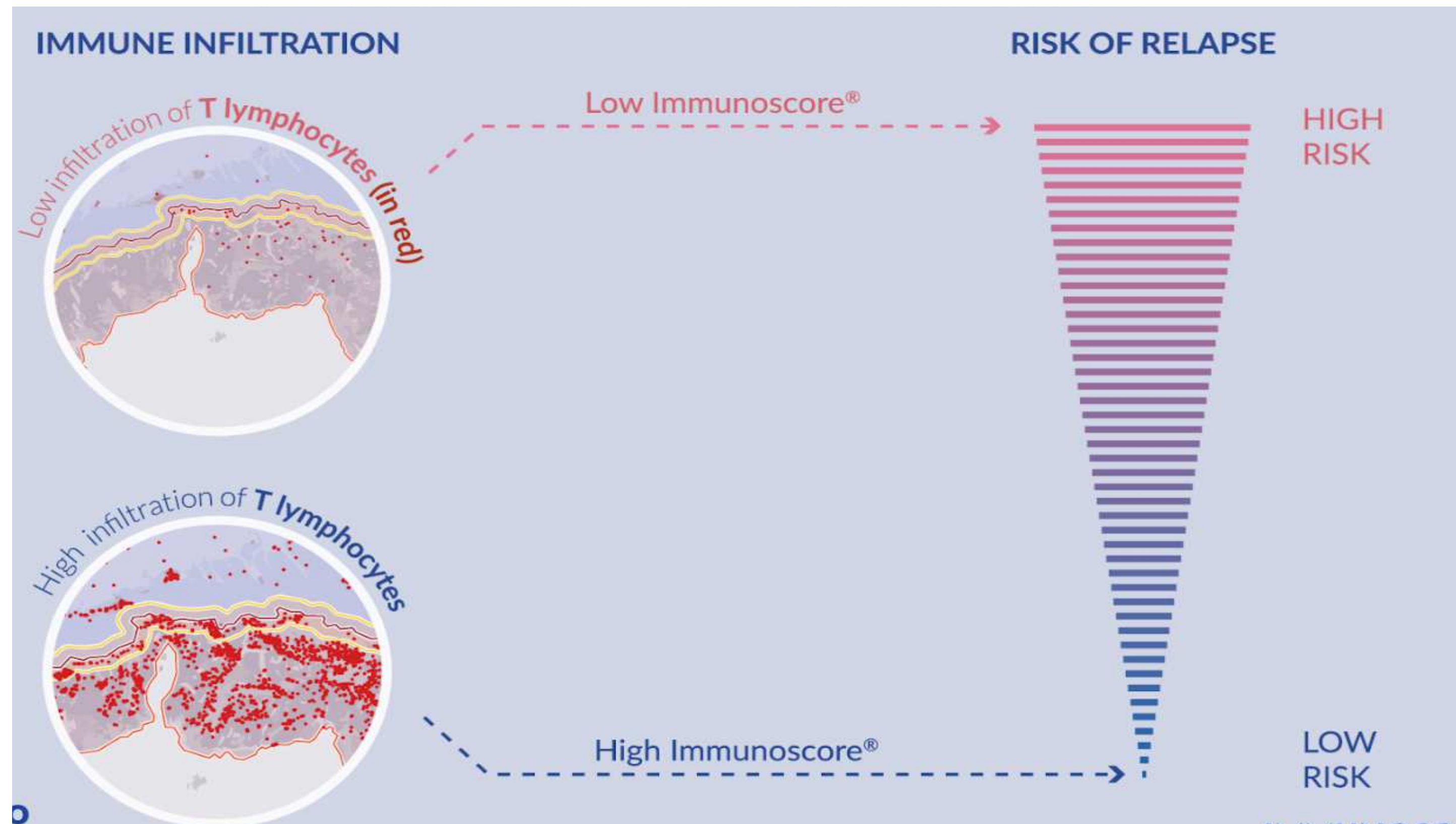
PROGNOSTIC
Biomarker

My recurrence risk can
guide my doctor to take
the tailored clinical
decision, so that I have
**the best chance of
survival**

Will my tumor
RECURRE?

Now, the immune response can be assessed and computed in a systemic score

New biomarker



Driven by clinical use

A reliable estimate of the risk of recurrence in colon cancer*

* The prognostic value of Immunoscore; in patients with cancer: A pooled analysis of 10,328 patients Xingxia Zhang, IJBM2020

This new immune biomarker was validated in large international study

published in one of the most reputable peer reviewed journals

THE LANCET

Articles

W

CrossMark

International validation of the consensus Immunoscore for the classification of colon cancer: a prognostic and accuracy study

A large-scale international clinical study validates the prognostic value of Immunoscore® in colon cancer

- An international consortium confirms the strong prognostic value of the Immunoscore® assay in early stage colon cancer.
- Published in *The Lancet* on May 11, 2018, these results validate the reliability of Immunoscore® Colon in identifying patients with a high risk of recurrence, independently of the TNM¹ staging system.

Open access

Original research

Journal for ImmunoTherapy of Cancer

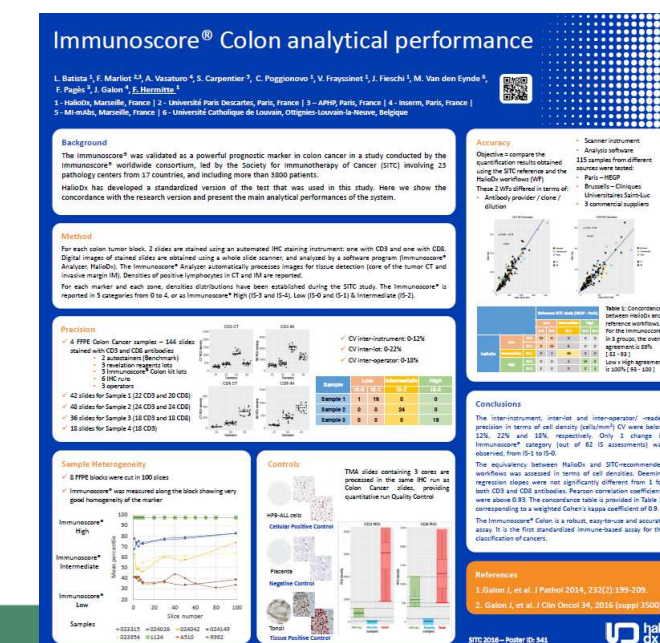
Analytical validation of the Immunoscore and its associated prognostic value in patients with colon cancer

Florence Marliot,¹ Xiaoyi Chen,² Amos Kirilovsky,¹ Thomas Sbarrato,³ Carine El Sissy,¹ Luciana Batista,⁴ Marc Van den Eynde,⁵ Nacilla Haicheur-Adjouri,⁶ Maria-Gabriela Anitei,⁷ Ana-Maria Musina,⁷ Viorel Scripcariu,⁷ Christine Lagorce-Pagès,¹ Fabienne Hermitte,³ Jérôme Galon,¹ Jacques Fieschi,³ Franck Pagès¹

J Immunother Cancer: first published as 10.1136/itc

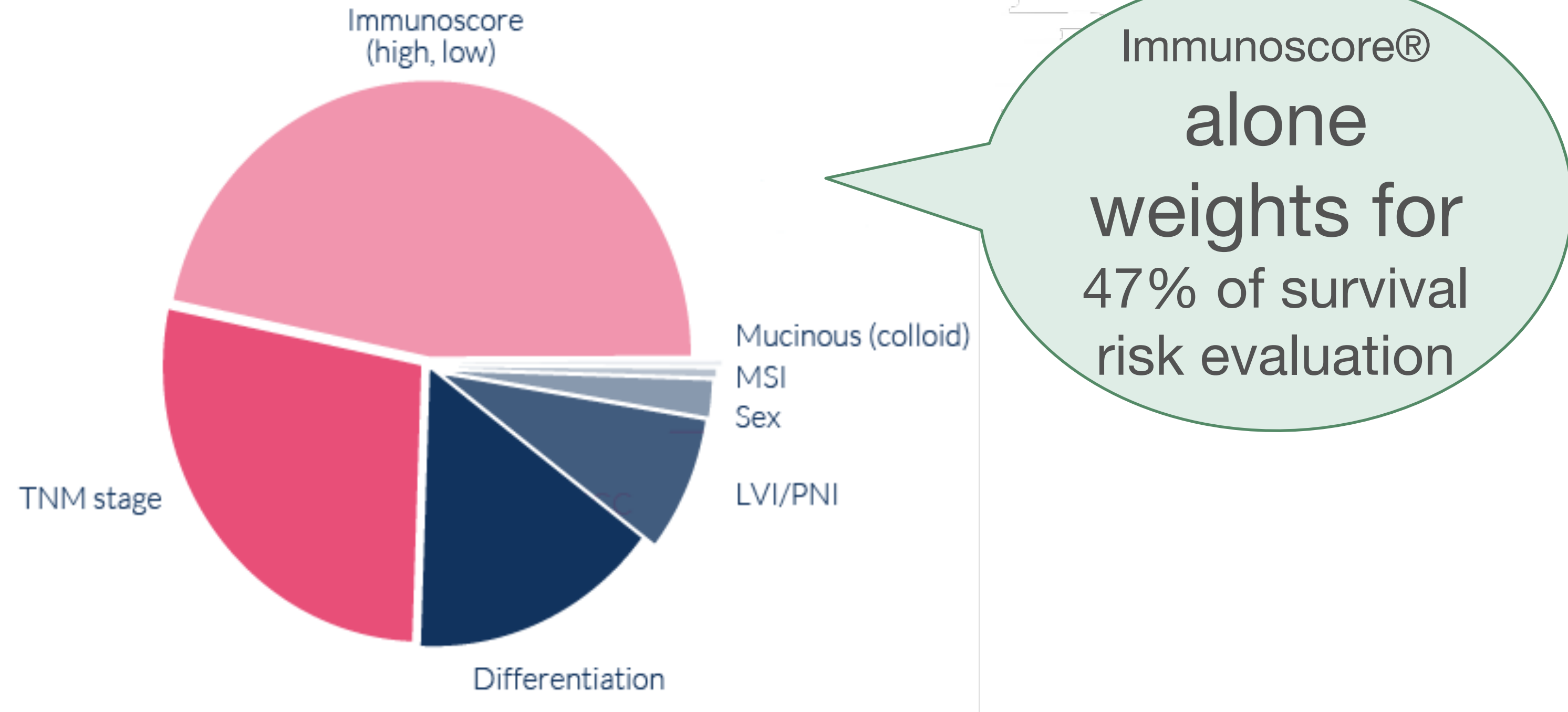
Key characteristics filled:

- ✓ Clinically validated
- ✓ Accurate
- ✓ Repeatable
- ✓ Stable
- ✓ Applicable, available



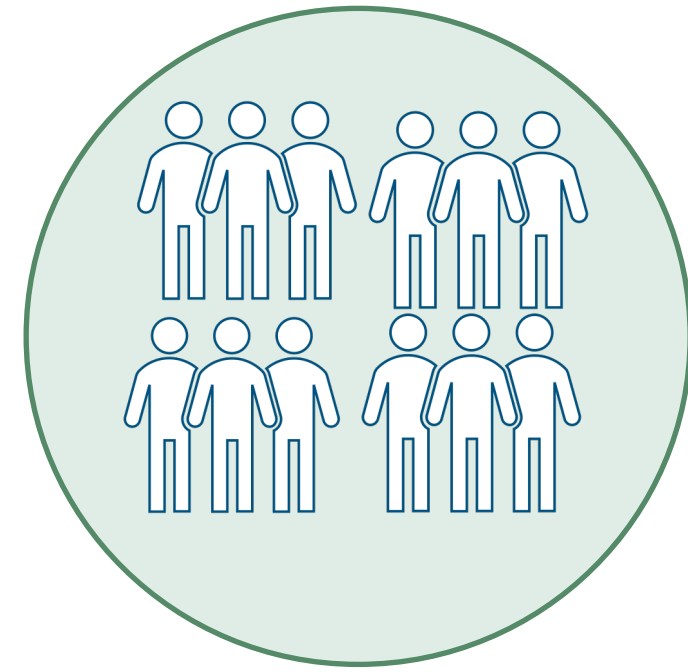
Now, your doctor can know your chances of survival very early and accurately.

Relative contribution of Immunoscore® to survival risk

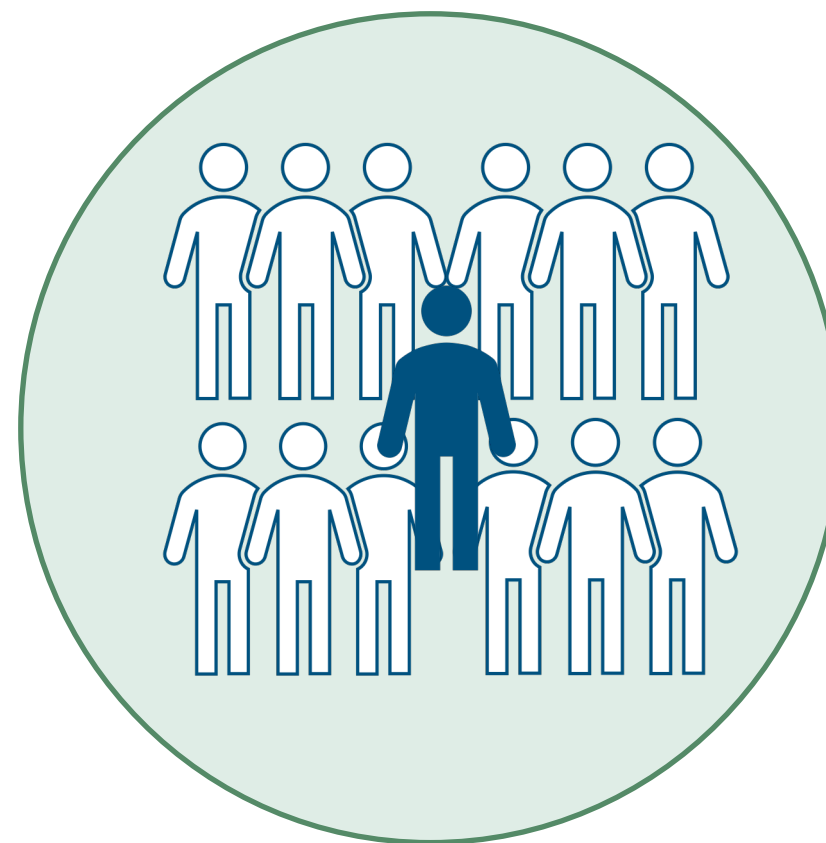
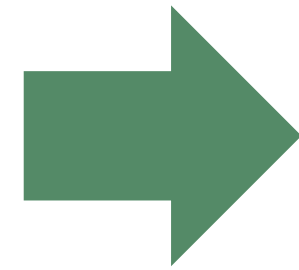


This independant parameter has the highest relative contribution to the survival risk of all clinical parameters, including the TNM classification system

Assess your immune response to maximize your survival chance



BEFORE



UP TO DATE

Your immune capital informs:

- If chemotherapy is needed for your personal case
- The efficient chemotherapy duration without unnecessarily altering your quality of life

Assess your immune response to tailor your chemotherapy

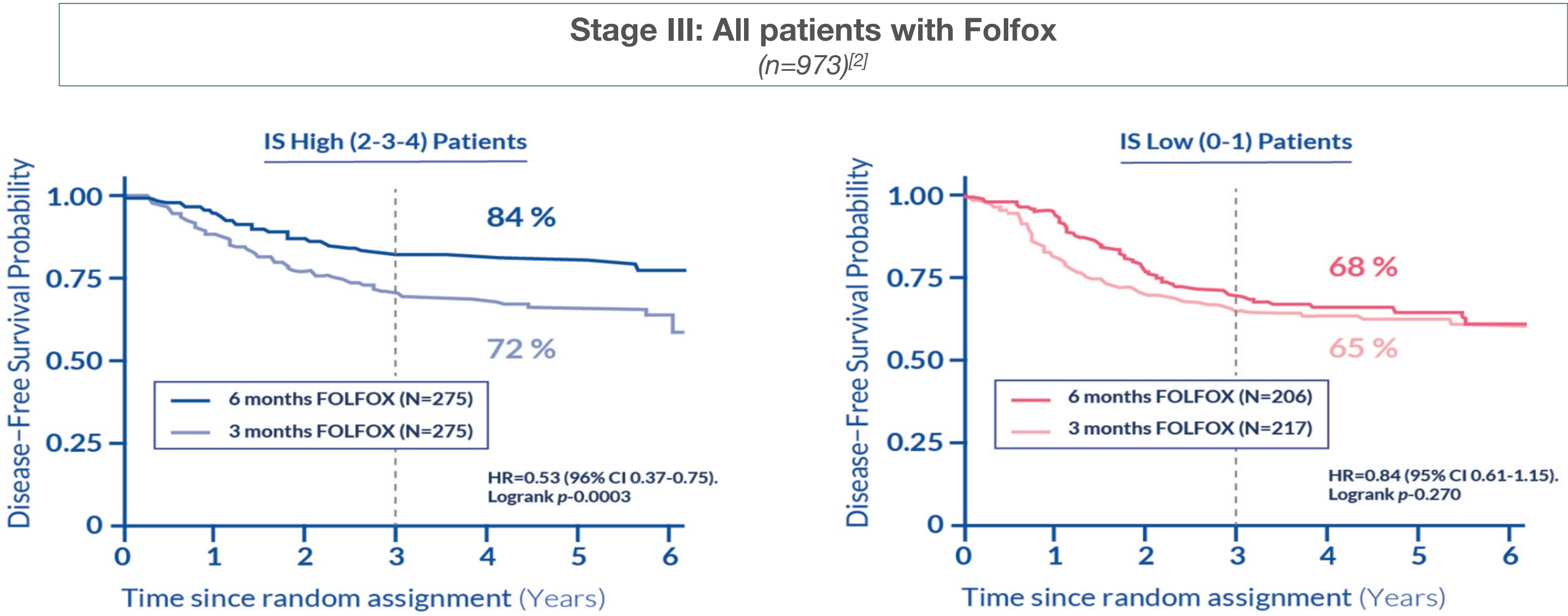
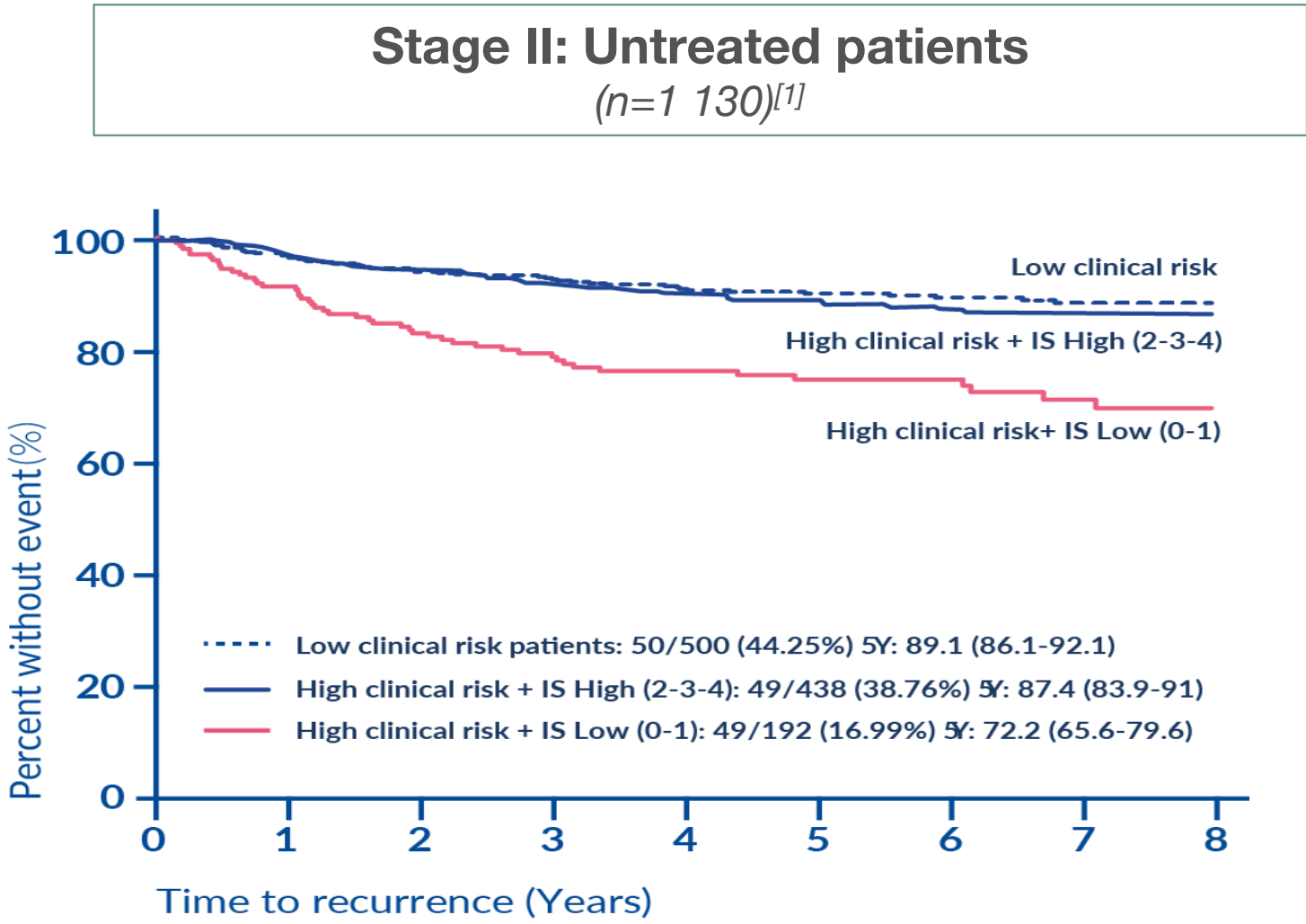
STAGE II

“can I avoid chemotherapy with no risk / peace of mind ?”

STAGE III


« what is MY appropriate chemo duration without unnecessarily altering quality of life? »

Clinical Data



[1] Pagès F et al. The Lancet 2018

[2] Pages F, Andre T, Taieb J et al., Ann Oncol. 2020 Apr 12



**With immunomics
precision
medicine**

**Paradigm change
is underway**

**In treatment
but also in
prevention
and control**

Reveal your immune score :

- To better know your own cancer feature
- To avoid toxic unnecessary treatments
- To personalize your treatment
- To maximize your chance of survival
- To take part in your treatment decision making

Effective Clinical Experience

Patient profile:

67 Male diagnosed with T3 N0 sigmoid cancer lymphovascular and lymphatic invasion- some high risk features- ? chemo

Patient profile:

*52 female diagnosed with T4 N0 transverse colon cancer- emergency presentation
? Chemo*



Decided to use immunoscore® to help make decision.

Immunoscore® revealed – low risk of relapse-

Decision to not offer adjuvant chemotherapy.

Decided to use immunoscore® to help make decision.

Immunoscore® revealed- high risk of relapse

Decision to offer chemotherapy